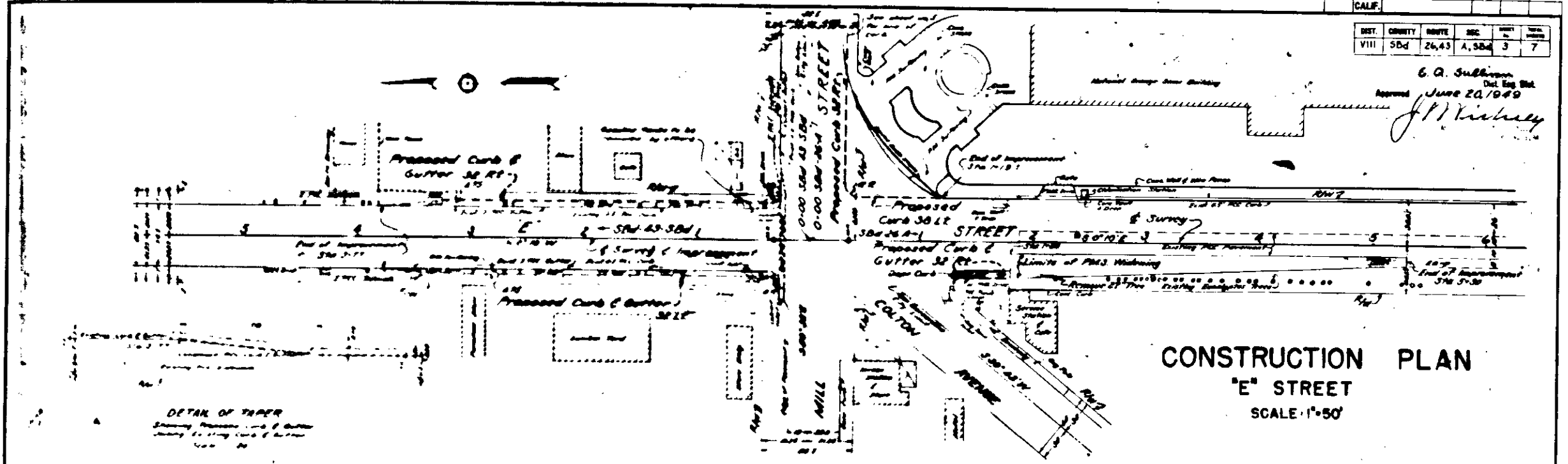
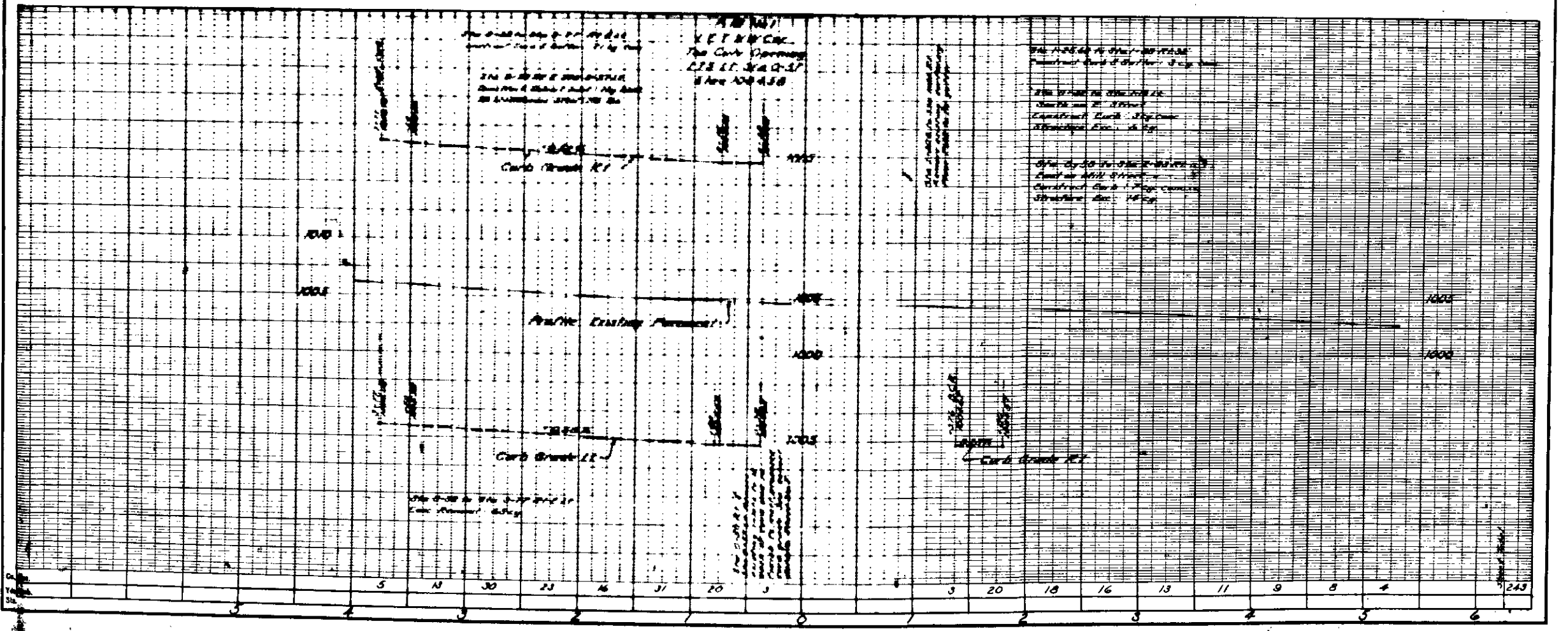


DIST.	COUNTY	ROUTE	SEC.	TRAC.	SHEET
VIII	SBd	26,43	A, 38d	3	7

C. A. Sullivan  
 Dist. Eng. Bldg.  
 Approved June 20, 1949  
*J. P. Kishely*

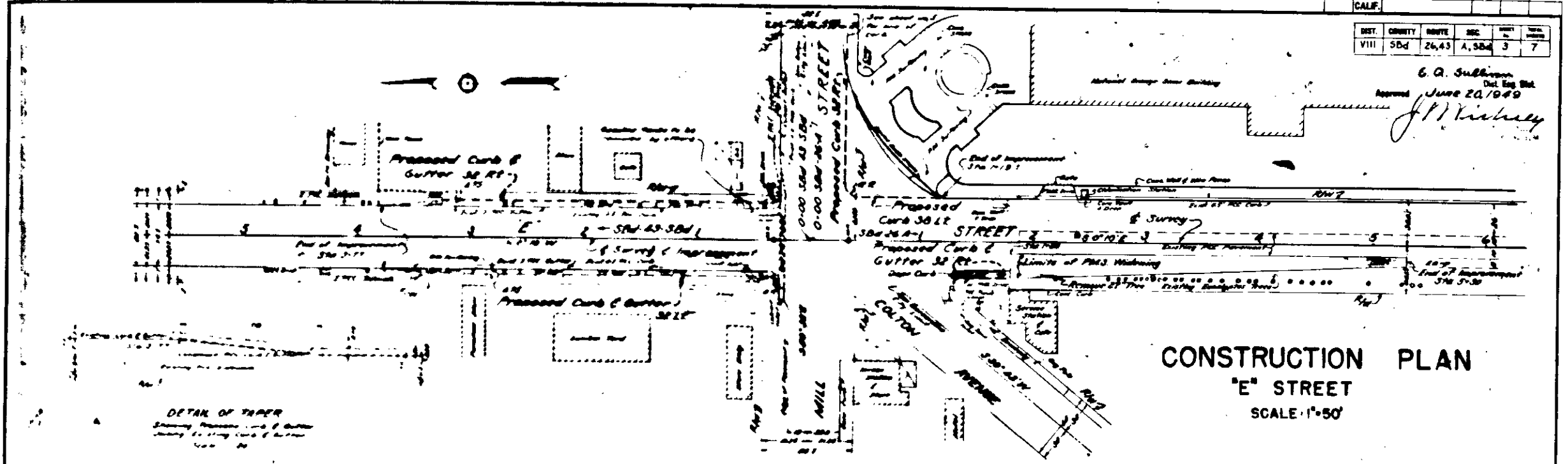


DETAIL OF TAPER  
 Showing Proposed Curb & Gutter  
 Showing Existing Curb & Gutter  
 1/2" = 10'

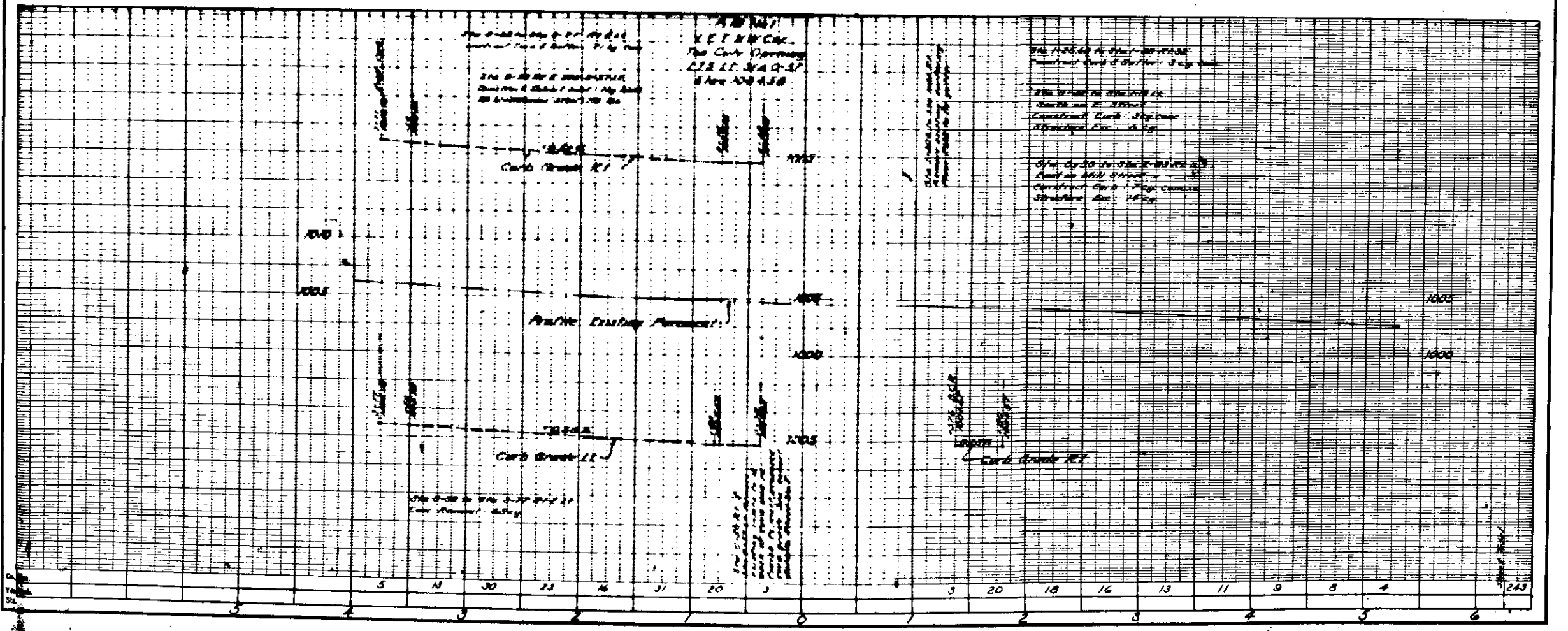


DIST.	COUNTY	ROUTE	SEC.	TRAC.	BLK.
VIII	SBd	26,43	A, 38d	3	7

C. A. Sullivan  
 Dist. Eng. Bldg.  
 Approved June 20, 1949  
*J. P. Kishely*

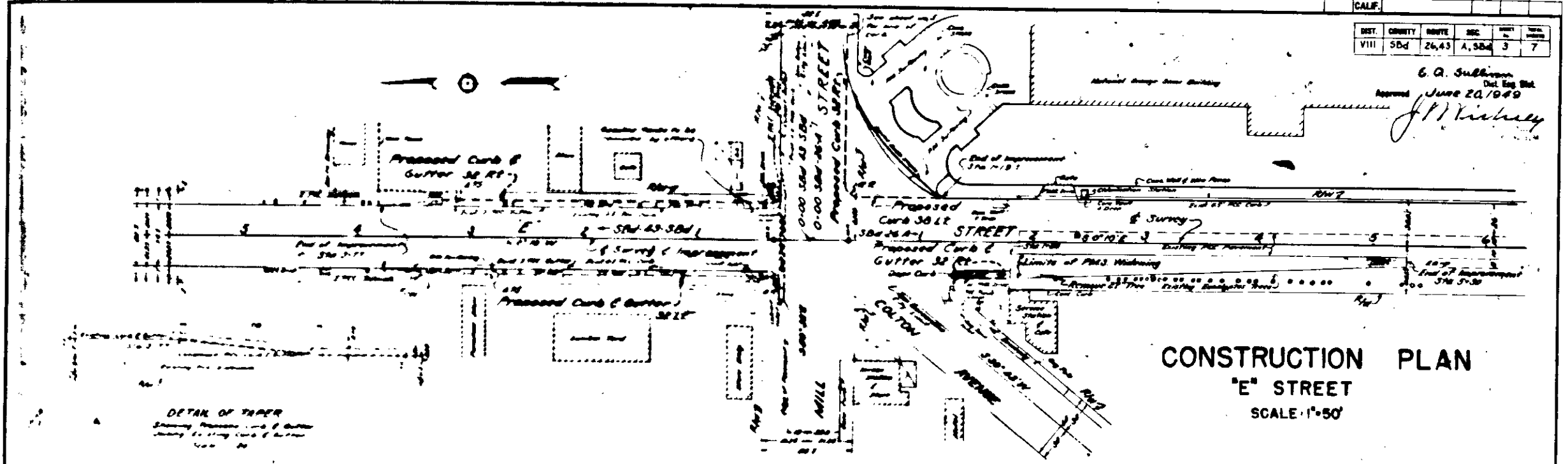


DETAIL OF TAPER  
 Showing Proposed Curb & Gutter  
 Showing Existing Curb & Gutter  
 1/2" = 10'



DIST.	COUNTY	ROUTE	SEC.	TRAC.	SHEET
VIII	SBd	26,43	A, SBd	3	7

C. A. Sullivan  
 Dist. Eng. Dist.  
 Approved June 20, 1949  
*J. P. Kishely*



DETAIL OF TAPER  
 Showing Proposed Curb & Gutter  
 Showing Existing Curb & Gutter  
 1/2" = 10'

